



# Den Braven



## Acryl-1001U

High quality acrylic dispersion sealant

- Paintable with water based- and synthetic paints.
- Perfect adhesion with the use of a primer, even slightly damp substrates.
- In- and outside applicable.
- Nearly non smelling.
- Easy to apply.
- Easy to clean.
- Non corrosive towards metals.



## Product Description

**Zwaluw Acryl-1001U** is a plasto elastic sealant based on an acrylic dispersion. After application the product forms a soft plasto elastic rubber by evaporation of water from the sealant.

## Applications

**Zwaluw Acryl-1001U** has been developed especially for **sealing joints between: wooden and metal window frames, concrete and brickwork, stairs and walls, concrete and ceiling elements, wall and ceiling, skirting boards and windowsills.**

## Joint design

A well-designed joint is a joint with a sufficient width so it would be able to take and process the movement of the adjacent building elements. The joint depth should always be in the correct relationship of the joint width. A general rule is the ratio of joint depth to the width of the joint with a joint width till 10 mm is 1:1, with a minimum of 5 mm in width and depth. For joints wider than 10 mm, the depth is the width divided

## Surface Preparations and Finishing

Application temperature +5°C till +40°C (applies to environment and substrate). All surfaces must be clean, free from dust, grease and solid substrate. Substrate to be cleaned from all loose particles, porous substrate do not require to be absolutely dry.

Very porous substrates like: Gypsum, aerated concrete, limestone, etc. need to be primed with a mixture of 1 part **Zwaluw Acryl-1001U** and 2 parts water. Adhesion tests prior to application are recommended. Finish and smoothen with water.

## Paintability

**Zwaluw Acryl-1001U is paintable after full drying of sealant.** During curing product will show shrinkage, which can cause cracking of the paint. Excellent paintable with water based and synthetic paints. Painting with high filled water based paints can create cracking.

## Cleaning

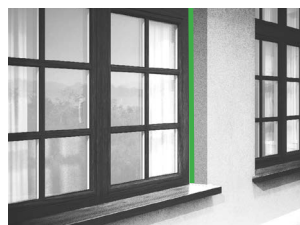
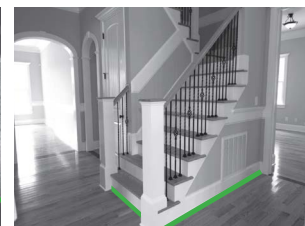
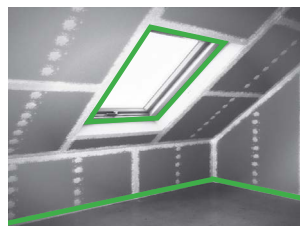
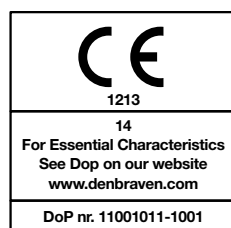
Tools to be cleaned after use with water. Hands can be cleaned with Zwaluw Wipes and/or water and soap.

## Packaging

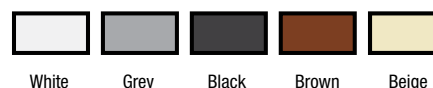
- Cartridge 280 ml.
- Sausage 600 ml.

## Shelf Life

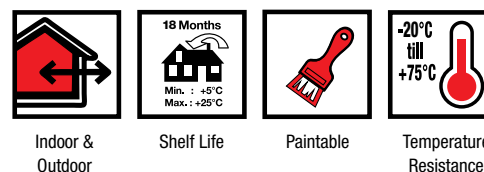
In unopened original packaging between +5°C and +25°C, shelf life till 18 months after production date, stored in a dry place.



## Available Colors



## Product Features



## Additional information

Application Rate		450 g/min @3mm/4 bar
Application Temperature		+5°C till +40°C
Base		Acrylaat dispersie
Density		1,69 g/ml
Elongation at Break		200%
Flow	ISO 7390	< 2 mm
Frost Resistance during transportation		Till -15°C
Joint Movement		7,5%
Shore-A hardness	DIN 3505	28 Shore A
Skin Formation		5 minutes @ 23°C/ 55% RH
Temperature Resistance		-20°C till +75°C
Tensile Strength (DIN 53504)		0,38 Mpa

## Middle East

Den Braven Middle East DMCC, Office 15 F & 15 G, Silver Tower AG, Cluster I Jumeirah Lakes Towers, PO BOX 33 63 93, Dubai, UAE, Tel : +971 (0) 4 360 3070 Fax: +971 (0) 4 431 3042, info.me@denbraven.com

## Headquarters

Denariusstraat 11, 4903 RC Oosterhout (NB), The Netherlands, P.O. Box: 194, 4900 AD Oosterhout, Tel: +31 (0) 162 491000, Fax: +31 (0) 162 451217

**Made in The Netherlands**

